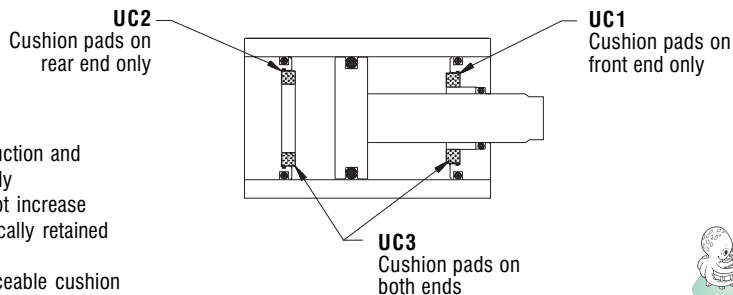


Urethane Cushion Pads

- Designed for noise reduction and minor piston impact only
- Cylinder length does not increase
- Cushion pads mechanically retained within the endcap
- Repairable part - replaceable cushion pads



UC

Example: UC1, UC2, UC3

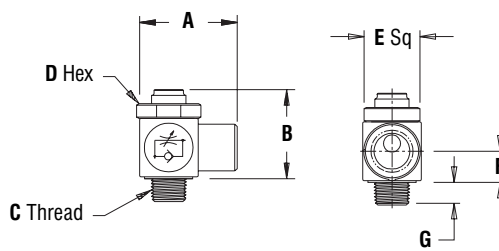
**Ordering Suffix** UC  
**Bore** 20mm - 40mm  
**Temperature** -18° - 66° C  
**Service** Pneumatic only  
**Material** Polyurethane



This option **does not** replace external shock absorbers needed for high loads.

Flow Controls

Model #	A	B	C	D	E	F	G
MO5 MI5 NV5	17,46	15,08	M5	7,94	9,53	5,56	3,18
MOG18 MIG18 NVG18	25,4	23,37	1/8-28 (G1/8)	14,29	14,29	8,13	6,10
MOG14 MIG14 NVG14	28,58	26,42	1/4-19 (G1/4)	17,46	17,46	9,65	6,60



"Flip" to our Flow Control flier for more information.



Hollow Rod

Our hollow rod option is available for applications that require passage through a double ended rod.

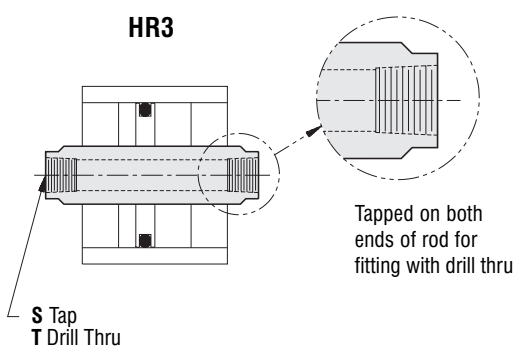
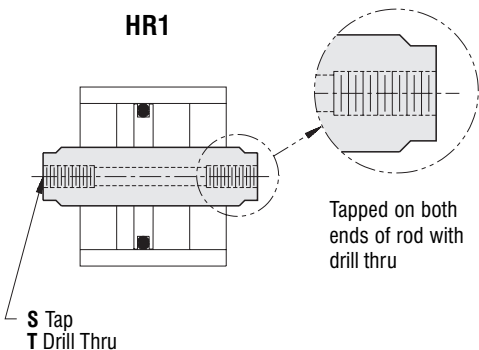


Not for use with Hydraulic cylinders or Non-Rotating rods

HR

Specify option 1 or 3

**Ordering Suffix** HR  
**Bore** 20mm - 40mm only  
**Duty** Standard and Full Husky only  
**Rod Service Applications** Double only  
 Pneumatic only  
 Gases, Liquids, Vacuum, Linear/Rotary, Clamp & Punch, Blow Molding



Bore	HR1		HR3	
	S Tap	T Drill Thru	S Tap	T Drill Thru
20	M5x0,8 x 12,5 Dp	4,3	NA	NA
25	M5x0,8 x 12,5 Dp	4,3	NA	NA
40	M6x1,0 x 15 Dp	5,2	G 1/8	8,5

Styles	Stock Stroke Lengths									
	Strokes									
	5	10	15	20	25	30	35	40	45	50
WSD, WBD, WTD		✓		✓	✓	✓		✓		✓
WSFHD, WBFHD, WTFHD	✓		✓	✓	✓		✓		✓	✓
AWSD, AWBD, AWTD		✓		✓	✓	✓		✓		✓
AWSFHD, AWBFHD, AWTFHD	✓		✓	✓	✓		✓		✓	✓

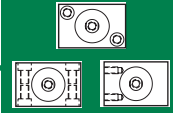
SPECIALS: Consult factory with ID requirements, thread information, pipe taps, etc.

X    
 Cylinder Part Number      Stroke      Option



# Rod End & Flange Options

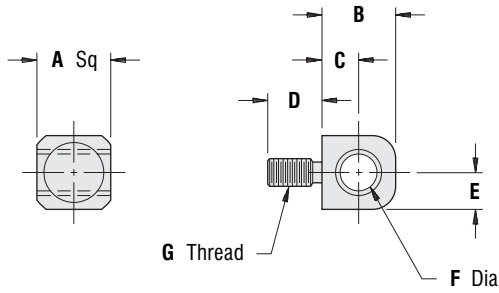
All Styles



## 12mm - 40mm Bore

RE / FF / RF

### Rod Eye



**RE**

**Ordering Suffix** RE  
**Pressure Rating** 12mm: thru 8 BAR  
 20mm - 40mm: thru 15 BAR  
**Material** CRS with black oxide finish and sintered bronze bearing

Bore	A	B	C	D	E	F	G
12	8	8	4	6	4	3	M3x0,5
20	9,5	10	5	10	4,8	5	M5x0,8
25	9,5	10	5	10	4,8	5	M5x0,8
40	16	16	8	12	8	8	M6x1

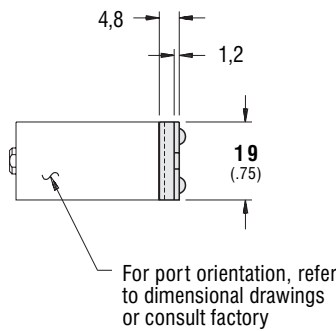
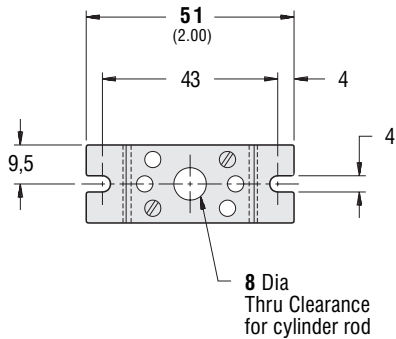


- Rod eye screws flush with cylinder rod face



### Flange Mount (Shown as Rear Flange)

#### 12mm Bore



Front Flange

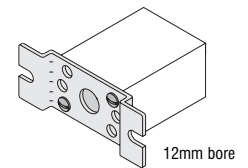
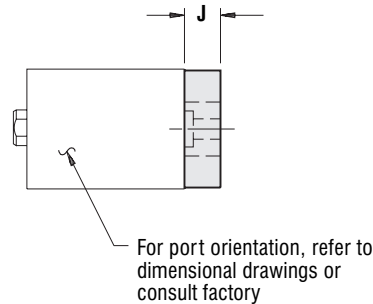
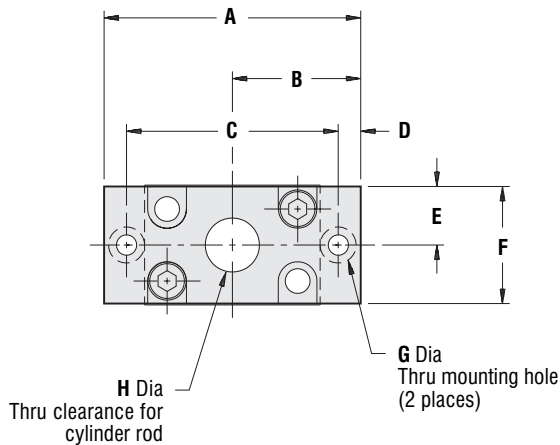
**FF**

Rear Flange

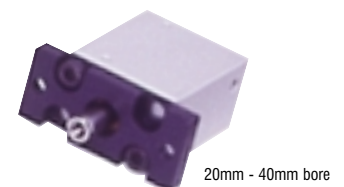
**RF**

**Ordering Suffix** FF or RF  
**Bore** 12mm - 40mm  
**Style** "S" only  
**Material** 12mm: Steel black oxide  
 20mm - 40mm: Aluminum black anodized

#### 20mm - 40mm Bore



Bore	A	B	C	D	E	F	G	H	J
20	57	28,5	47	5	12,7	25,5	4,5	12	8
25	69	34,5	57	6	15,9	31,8	5,5	16	9,5
40	87	43,5	75	6	22,2	44,5	5,5	24	9,5



X    
 Cylinder Part Number      Stroke      Option

COMPACT® Metric Cylinders

Accessories • Accessories • Accessories • Accessories • Accessories

